

Glady Run - Erosion Control

**Project completed 2019 - 2020,
LLPOA Lakes Committee / Shoreline Sub-Committee**

Reported by. Jeff McGee & TJ Jackson - January 2022

During 2018 the LLPOA Board of Trustees initiated work which ultimately led to the approval of a plan by the LLPOA membership to dredge the coves, north end of the main lake, and the two smaller lakes with the passing of an assessment in 2021. The need to dredge the lakes had been identified for several years and many community members worked for several years on various committees to develop plans that allowed for the passing of the assessment.

One project that was identified prior to 2018 that needed attention was a serious erosion problem that was contributing to the build up of sediment in the north end of the lake. An extensive watershed north of the LLPOA property and enters the lake through a drainage system known as “Glady Run” is a major contributor of water (and sediment) to Lake Lorelei. There is not a continuous flow of water through Glady Run, however significant water flow occurs during any rain event and carries with it high-levels of sediment from nearby properties as well as sediment eroded from approximately 2500 feet of “ditches” before it enters the north end of the main lake.

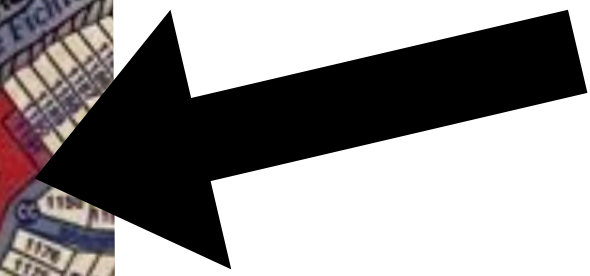
During 2019 the LLPOA Board of Trustees authorized the use of existing reserve funds to be utilized to control and significantly reduce the amount of sediment entering the north end of the lake from erosion of a large embankment adjacent to “Fichtelberg Plain”. It was believed that this work needed to be completed prior to any dredging efforts in the north end of the lake in order for the dredging efforts not to be wasted. The Board of Trustees authorized members of the Lakes Committee to undertake the project and the “Shoreline Sub-committee” accepted responsibility for developing and executing the project.

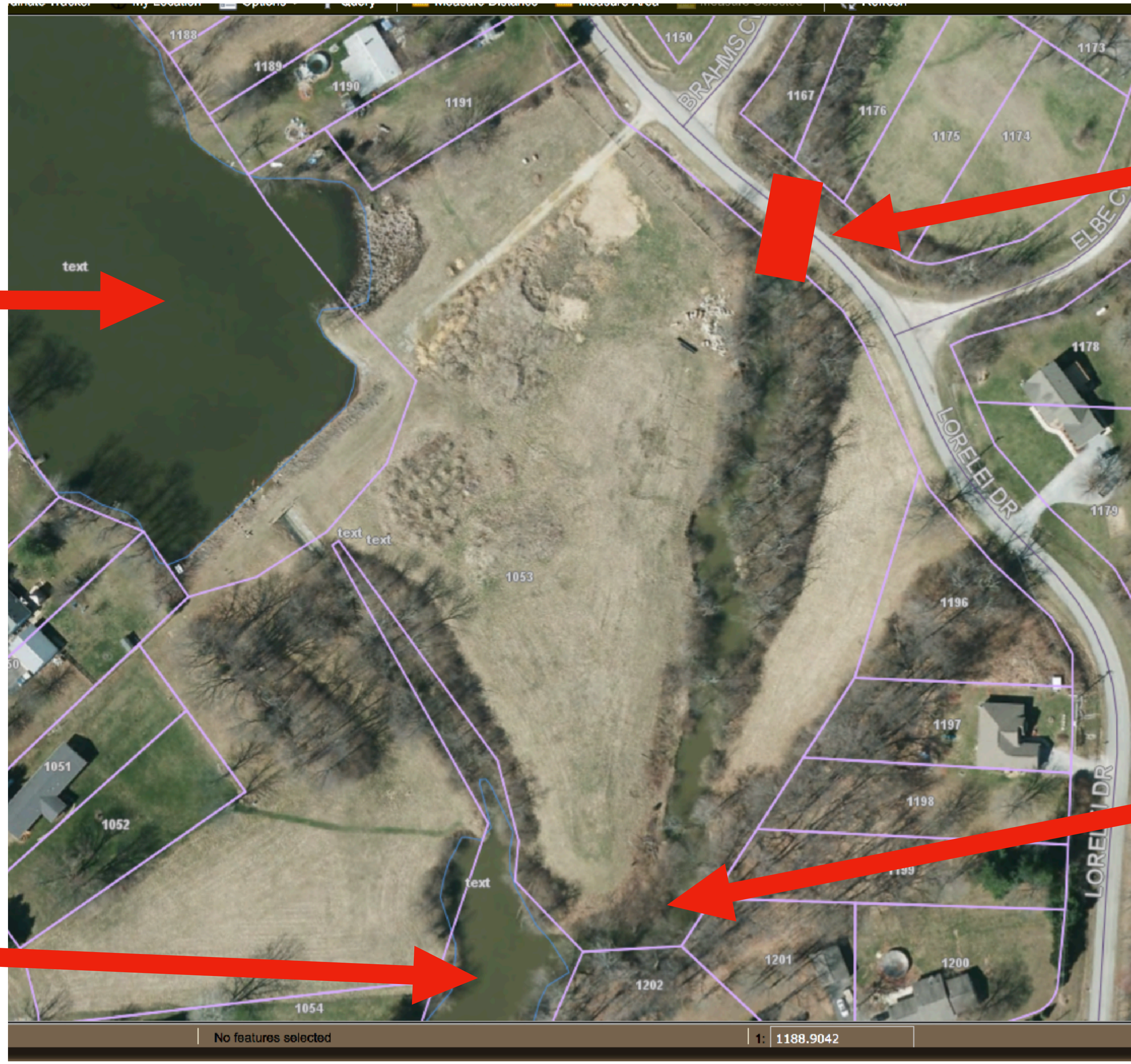
This presentation documents some of the work which was completed for the project. The information is being presented for informational purposes only and will hopefully serve as a historical documentation of the completed work.



Lake Lorelei

Fichtelberg Plain, located at north end of the main lake. Water from watershed flows through a 10 foot concrete box culvert under Lorelei Drive. The culvert is typically dry except during rain events.





Lake Fichtelberg



10 foot concrete box culvert



Location of severely eroded embankment



North end of Lake Lorelei





Sediment build up
in north end of Lake
Lorelei - Pictures
taken January 2018



The following slides show pictures from January 2018 documenting conditions prior to beginning of project.







The following slide shows planning work conducted in January 2019



The following slides show work which started in November 2019 and continued through March 2020.

On November 15th 2019 the valve located at the dam for the main lake was opened and the lake level allowed to drop to appropriate winter levels. The lake was lowered to a level which allowed for work to be completed in the north end of the lake without concern of back flow of water from the lake. A temporary earthen dam was installed in the area where the work was being conducted and inflowing water was pumped to the main lake, bypassing the work area.

Work on the project continued through March 2020, with final grading and seeding of the Fichtelberg Plain being completed during the spring. As a part of the project Fichtelberg Plain was graded to original design which eliminated materials which had been dumped in the area during previous projects, as well as re-established the emergency spillway for Lake Fichtelberg.

























The final slide shows pictures taken January 2022.

(Note that the water level in the lake is at winter pool.)

